



Non - Automatic Bilge Pumps 01 Series

Features & Benefits

Pump and switch are stand alone products
 Compact, efficient, long life motors
 New mercury free float switches
 Size: 350, 500, 750, 1100, 1500, 2000, 3000,
 3500 gph in 12 and 24 volt versions
 Easy clean snap-lock strainer bases
 Anti-Airlock protection
 Exclusive moisture tight seals
 Completely submersible
 Marine grade blocked wiring
 Silent and vibrationless operation

Typical Applications

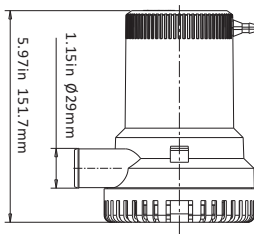
Marine
 RV & Campers
 Industrial

PUMP

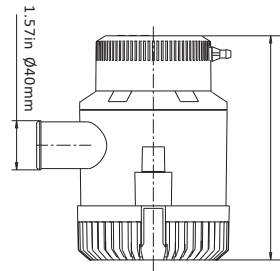
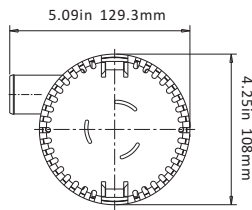
Liquid Temperature
 110°F (43°C) Max.
Priming Capabilities
 Not needed flooded suction
Power
 13.0 amps max current draw
Max Pressure
 Not needed

MOTOR

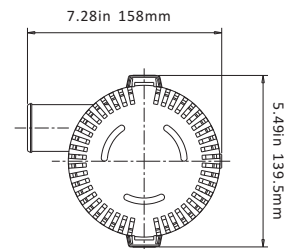
Type
 Compact, efficient, long life motor
Leads
 18 AWG, 1 m long Leads
Temperature Limits
 110°F (43°C) Max.
Duty Cycle
 Intermittent
Voltage
 12v/24v



1500 GPH-2000 GPH



3000 GPH-3500 GPH



STANDARD PUMP CONFIGURATIONS

Model	Flow rate	Volts	Current	Head	Wire lead	Outlet Dia	N.W/G.W
SFBP1-G1500-01	1500 GPH	12V	7.0A	5 m	1m	29 mm/1-1/8"	1.13/1.21 kg
SFBP2-G1500-01	1500 GPH	24V	5.0A	5 m	1m	29 mm/1-1/8"	1.13/1.21 kg
SFBP1-G2000-01	2000 GPH	12V	9.0A	6 m	1m	29 mm/1-1/8"	1.13/1.21 kg
SFBP2-G2000-01	2000 GPH	24V	5.5A	6 m	1m	29 mm/1-1/8"	1.13/1.21 kg
SFBP1-G3000-01	3000 GPH	12V	12.0A	8 m	1m	40 mm/1-1/2"	2.10/2.37 kg
SFBP2-G3000-01	3000 GPH	24V	7.0A	8 m	1m	40 mm/1-1/2"	2.10/2.37 kg
SFBP1-G3500-01	3500 GPH	12V	13.0A	8 m	1m	40 mm/1-1/2"	2.10/2.37 kg
SFBP2-G3500-01	3500 GPH	24V	8.0A	8 m	1m	40 mm/1-1/2"	2.10/2.37 kg